



# Emma Joan Hansen Jarvis

APR 2, 1953 - MAY 16, 2025



Scan to Visit

# Table of Contents

<b>Obituary</b> .....	Page 3
<b>Events</b> .....	Page 5
<b>Tribute Wall</b> .....	Page 6
<b>Media</b> .....	Page 7



# Emma Joan Hansen Jarvis

APR 2, 1953 - MAY 16, 2025

**E**mma Joan Hansen Jarvis passed away peacefully from natural causes on May 16th, 2025. She was born Dec 10, 1934 to Heber Eugene and Donna Creer Hansen. She attended the Benjamin Schools and graduated from Spanish Fork High School and LDS Seminary in 1953.

She married Lee Jarvis in the LDS Manti Temple on April 2, 1953. Six children joined the family over the next 7 years, Vicki (Dale) Jackson, Sherri (Richard) Pitts, Cathi Jarvis, Mark (Linda) Jarvis, Matt (Sandra) Jarvis, Jill (Mark) Olsen, 21 Grandkids, 70 Great Grandkids and 6 Great-Great Grandchildren. Siblings Karen (Bruce) Anderson, Janet (Lewis) Marrott, Kim (Patt) Hansen. Preceded in death by her parents, her in-laws Leon and Lucilla Jarvis, her brother Ted (Darlene) Hansen, and granddaughter Jenny Marie Olsen.

She loved to ride horses and served as a Rodeo Queen at several rodeos including Fiesta Days, Strawberry Days, Lehi Roundup and the Benjamin Rodeo. Joan loved people. She was a friend to everyone she met and she loved to visit. She met with a group of high school friends twice a month for over 60 years. She and Lee were part of a stockshow booster group known as the 'Lamb Chop Club' for over 50 years.

She was appointed by the Governor to serve on the Century Farm Board, she was active in the Wool Growers Auxiliary and served as the state 'Make It With Wool' Director. She was a 4-H Leader for sewing, cooking, and Horsemanship. She was an excellent seamstress and made most of her six children's clothing. She hand quilted quilts for each of her grandchildren and made embroidered baby quilts for the great grandkids.

She worked at the World Drug and Nebo Animal Clinic where she made many lasting friendships. She worked by her husband's side building Jarvis Sheep Company. They enjoyed traveling together for over 70 years to sheep shows and conventions all over the United States.



## Obituary

**Emma Joan Hansen Jarvis**

APR 2, 1953 - MAY 16, 2025

---

She was an excellent cook and no one ever left her home without a meal or a special treat. She canned fruits and vegetables every Fall and filled her pantry shelves. She and Lee enjoyed the summers she spent in Soda Springs, Idaho at their sheep ranch.

Many thanks to Bonnie Ballard Valdez and the iCare Hospice team. They, along with the staff at Spring Gardens has been a blessing to mom and our family during this time.

Services at the Palmyra LDS Church, 1866 W 5000 S, Spanish Fork, UT

Viewing Thursday, May 22nd, 6-8:00 pm and Friday before the services from 9:30-10:30am

Funeral Friday, May 23rd, 11:00am

For those who were unable to attend the services in person, a recording of the service was made:

<https://youtu.be/rqcK90uza3w>




# Events

**Emma Joan Hansen Jarvis**

APR 2, 1953 - MAY 16, 2025

## Viewing


 **Thursday**, May 22, 2025


 6:00 PM - 8:00 PM MT

 **Palmyra Church**  
1866 West 5000 South, Spanish Fork UT



## Viewing

 **Friday**, May 23, 2025

 9:30 AM - 10:30 AM MT

 **Palmyra Church**  
1866 West 5000 South, Spanish Fork UT

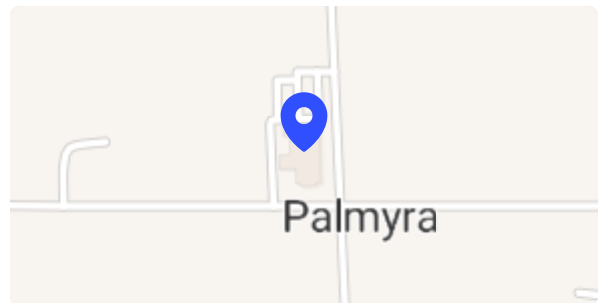


## Funeral

 **Friday**, May 23, 2025

 11:00 AM MT

 **Palmyra Church**  
1866 West 5000 South, Spanish Fork UT





## Tribute Wall

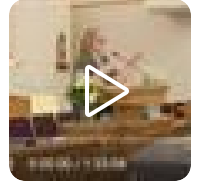
**Emma Joan Hansen Jarvis**

APR 2, 1953 - MAY 16, 2025



**Premier Funeral Services** shared a **Joan Jarvis Funeral Services**.

July 2 at 12:18 PM





**Media**

**Emma Joan Hansen Jarvis**

APR 2, 1953 - MAY 16, 2025



Premier Funeral Services shared a **Joan Jarvis Funeral Services.**

July 2 at 12:18 PM





## **Memories only last if you share them**

Join us in honoring Emma by contributing to a collection of shared memories.



Scan to Visit